



HOUSE & LAND
from
\$691,300*

CHARTERHOUSE
by Hickinbotham

HOUSE & LAND PACKAGE



DESIGNED BY AWARD-WINNING ARCHITECT MAX PRITCHARD, THIS HOME OFFERS ENVIRONMENTAL BENEFITS WITHOUT SACRIFICE. THIS LEADING-EDGE SUSTAINABLE HOME COMBINES WOW-FACTOR WITH INNOVATIVE AND STYLISH DESIGN SOLUTIONS TO SUIT THE ALLOTMENT AND SOLAR ORIENTATION. A TWO-STOREY ENTRY ATRIUM FLOODS THE HOME WITH NATURAL LIGHT. THE ENORMOUS VOLUME BUYING POWER OF SA'S LARGEST BUILDER, HICKINBOTHAM, ENSURES AN EXTREMELY COMPETITIVELY PRICED HOME.

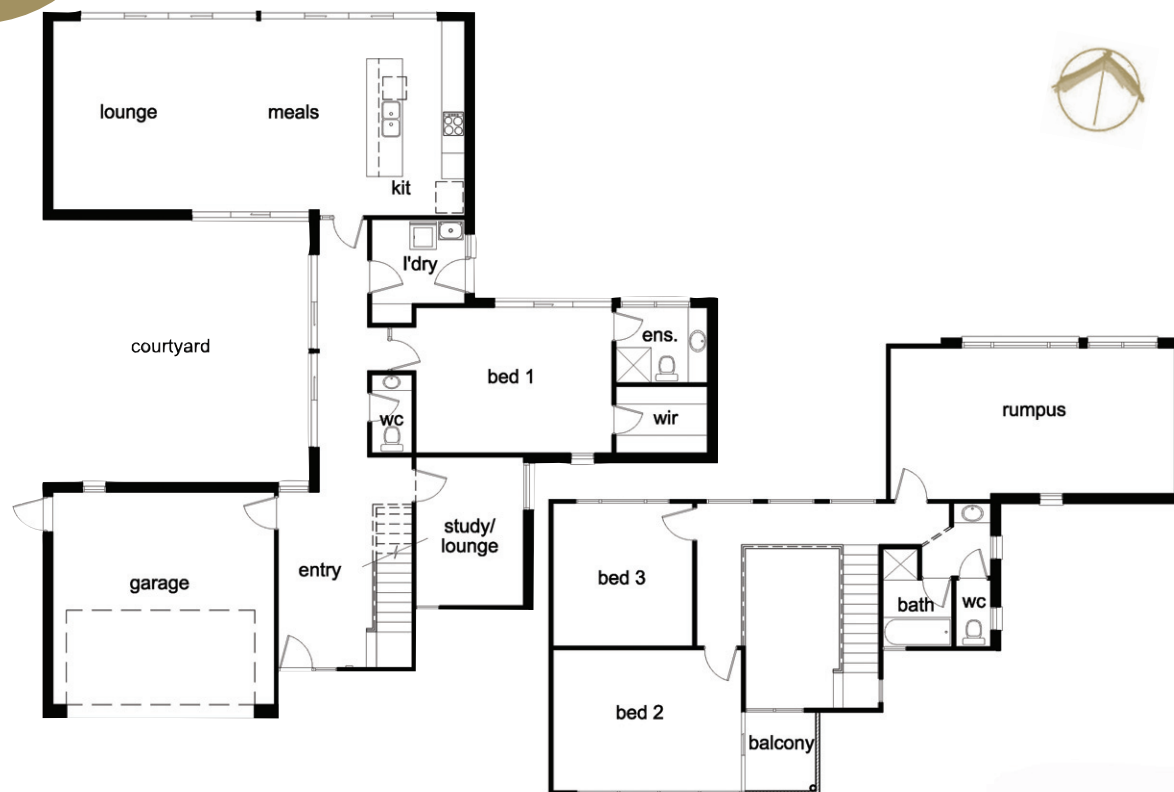
Inclusions

- Eco-friendly building schedule
- Minimum 7.5 energy efficiency rating
- Designer elevation to suit floorplan
- 3-bedrooms (main with Ens & WIR) + study + rumpus
- 2-bathrooms + powder room
- Double garage (fully-lined)
- Panel lift door to garage
- Contemporary open-plan living with large gourmet kitchen
- Western Red Cedar double-glazed windows
- Photovoltaic cell supply and install
- Solar hot water system
- Ceiling fans
- Middle floor insulation allowance
- Fibre optic cabling throughout home
- Ecovision home management system

- High-rated insulation as specified through external walls and ceiling
- 2700mm ceiling height to ground floor and level 1
- Full width mirror to bathroom
- Carpet and tiling allowance
- Overhead cupboards to kitchen
- Walk-in pantry including shelves
- Rainwater tank 2000L
- Termite protection
- Footings allowance
- Plus much more

Size Specifications

Width 17.20m (incl. garage)
Depth 18.00m



Visit our Display Home by appointment, at Lot 31 Lochiel Parkway, Lochiel Park

Lot 7 Treloar Court
Lochiel Park

For further details:
Mark Flynn
0402 125 755

* Subject to conditions and acceptance by company. Not valid with any other offer. Price may change without notice. © Charterhouse by Hickinbotham - Floorplans and elevations are for illustration purposes only. Unauthorised use of these plans constitutes a breach of copyright which will make you personally liable for damages. The industry standard is 20% of the contract sum. Pergola to be completed by owner after handover. Date of issue 25 May, 2010.