



HOUSE & LAND
from
\$695,200*

CHARTERHOUSE
by Hickinbotham

HOUSE & LAND PACKAGE



DESIGNED BY AWARD-WINNING ARCHITECT MAX PRITCHARD, THIS HOME IS RATED 8.2 STARS FOR ENERGY EFFICIENCY, AND OFFERS ENVIRONMENTAL BENEFITS WITHOUT SACRIFICE. THIS LEADING-EDGE SUSTAINABLE HOME COMBINES WOW-FACTOR WITH INNOVATIVE AND STYLISH DESIGN SOLUTIONS, LIKE A FANTASTIC CENTRAL COURTYARD AND AN EXPANSIVE VOID THAT FLOODS BOTH LEVELS OF THE HOME WITH NATURAL LIGHT. THE ENORMOUS VOLUME BUYING POWER OF SA'S LARGEST BUILDER, HICKINBOTHAM, ENSURES AN EXTREMELY COMPETITIVELY PRICED HOME.

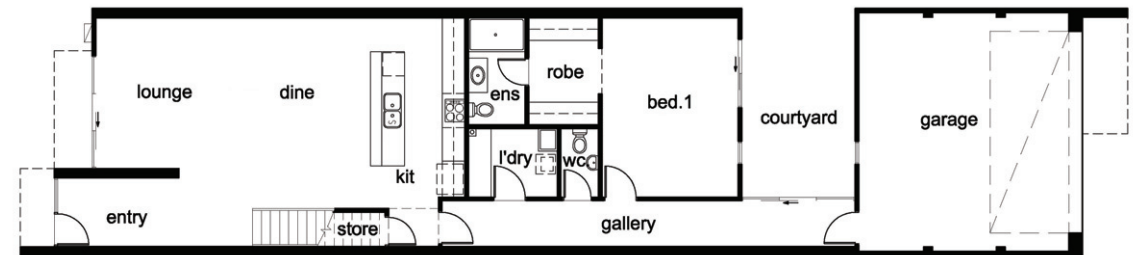
Inclusions

- Eco-friendly building schedule
- 8.2 star energy efficiency rating
- Designer elevation to suit floorplan
- 4-bedrooms (main with Ens & WIR) + studio
- 3-bathrooms + powder room
- Double garage (fully-lined)
- Panel lift door to garage
- Contemporary open-plan living with large gourmet kitchen
- Western Red Cedar double-glazed windows
- Photovoltaic cell supply and install
- Solar hot water system
- Ceiling fans
- Middle floor insulation allowance
- Fibre optic cabling throughout home
- Ecovision home management system

- High-rated insulation as specified through external walls and ceiling
- 2700mm ceiling height ground floor and level 1
- Full width mirror to bathroom
- Carpet and tiling allowance
- Overhead cupboards to kitchen
- Walk-in pantry including shelves
- Rainwater tank 2000L
- Termite protection
- Footings allowance
- Plus much more

Size Specifications

Width 6.50m
Depth 28.06m (incl. garage)



Visit our Display Home by appointment, at Lot 31 Lochiel Parkway, Lochiel Park

Lot 27 Hobbs Drive
Lochiel Park

For further details:
Mark Flynn
0402 125 755

* Subject to conditions and acceptance by company. Not valid with any other offer. Price may change without notice. © Charterhouse by Hickinbotham - Floorplans and elevations are for illustration purposes only. Unauthorised use of these plans constitutes a breach of copyright which will make you personally liable for damages. The industry standard is 20% of the contract sum. Pergola to be completed by owner after handover. Date of issue 25 May, 2010.